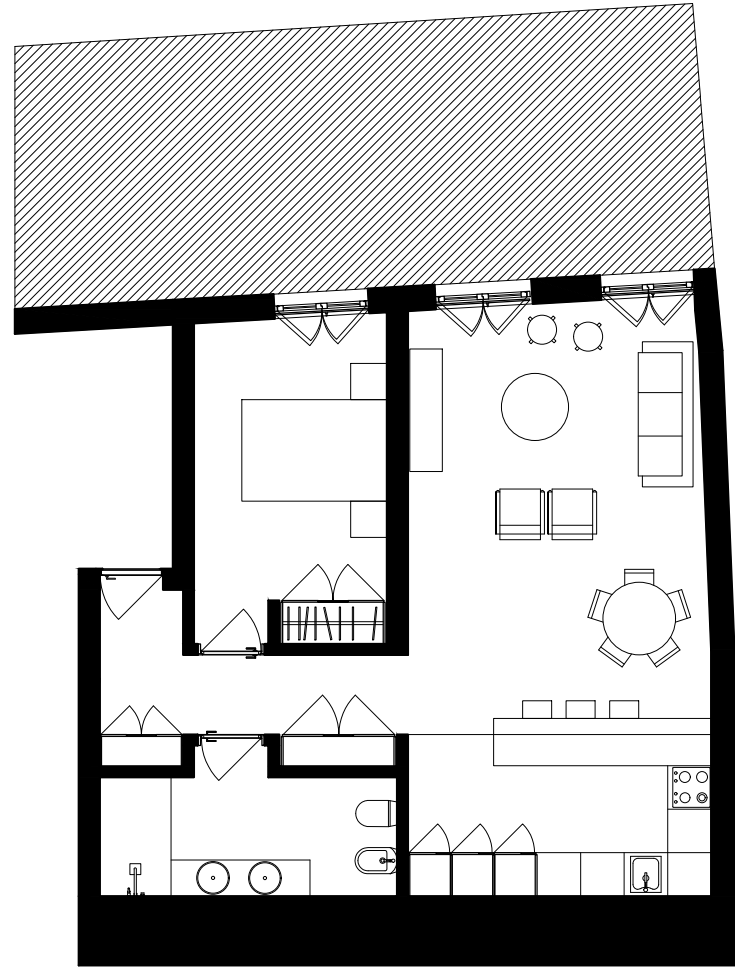


GLORIA



Apartamento CVC - Piso de Jardim
T1 - 79.61 m² - Terraço 34.56 m²

Unit CVC - Garden Floor
1 bedroom - 79.61 sqm - Terrace 34.56 sqm

www.gloria-lisboa.com

As áreas aqui apresentadas são aproximadas, indicativas e sem carácter contratual. | The areas here contained are approximate, indicative and have no contractual nature.

Promotor / Developer



upi@upi.pt