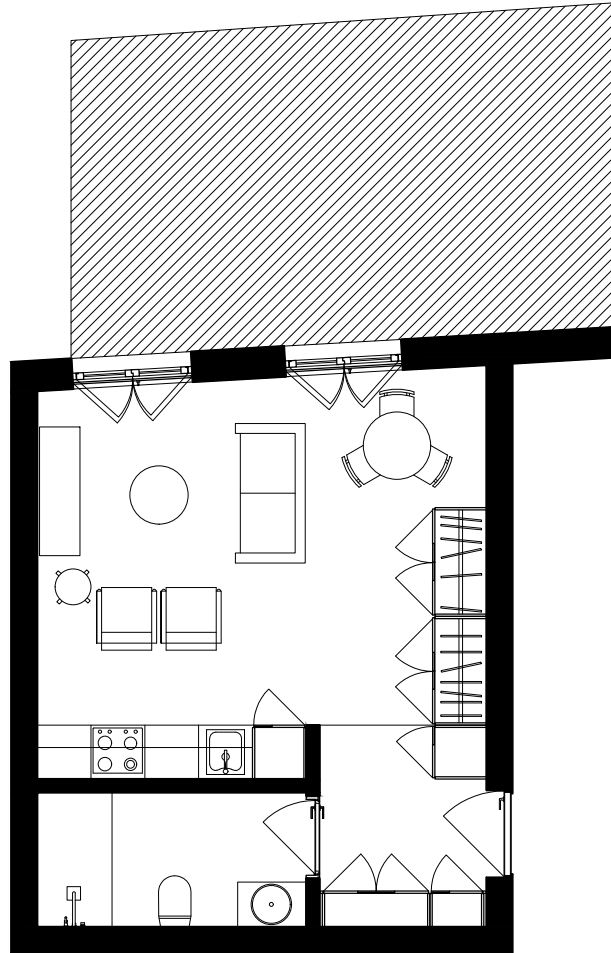


GLORIA



Apartamento CVB - Piso de Jardim
T0 - 36.77 m² - Terraço 22.04 m²

Unit CVB - Garden Floor
Studio - 36.77 sqm - Terrace 22.04 sqm

www.gloria-lisboa.com

As áreas aqui apresentadas são aproximadas, indicativas e sem carácter contratual. | The areas here contained are approximate, indicative and have no contractual nature.

Promotor / Developer



upi@upi.pt